



# inWebDTS

**inWebDTS** provides highly sophisticated customer solutions for web display of actual vessel traffic data. Data are provided by a real VTS/CSS system or traffic analysis system (TAS), where AIS as well as radar information is integrated. Historic data stored in a data base can also be included.

**inWebDTS** allows determining data specific access rights for each user.

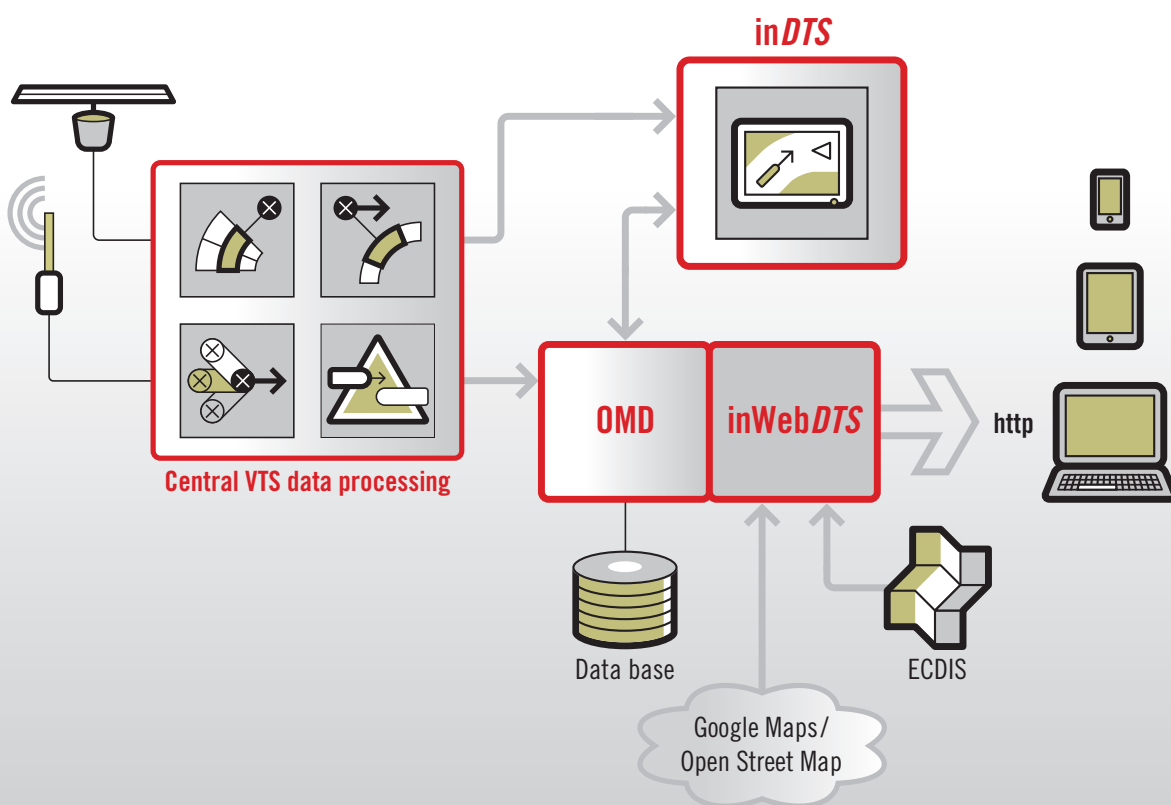
Rule-based control opens a variety of interactions with the web user, like notification as soon as a vessel enters a specific area. Notification can take place via email or directly on the screen.

An internet user can not only receive the information, but also enter data. He is, for example, able to configure his individual automatic warnings. Additional information can be entered and stored as attributes.

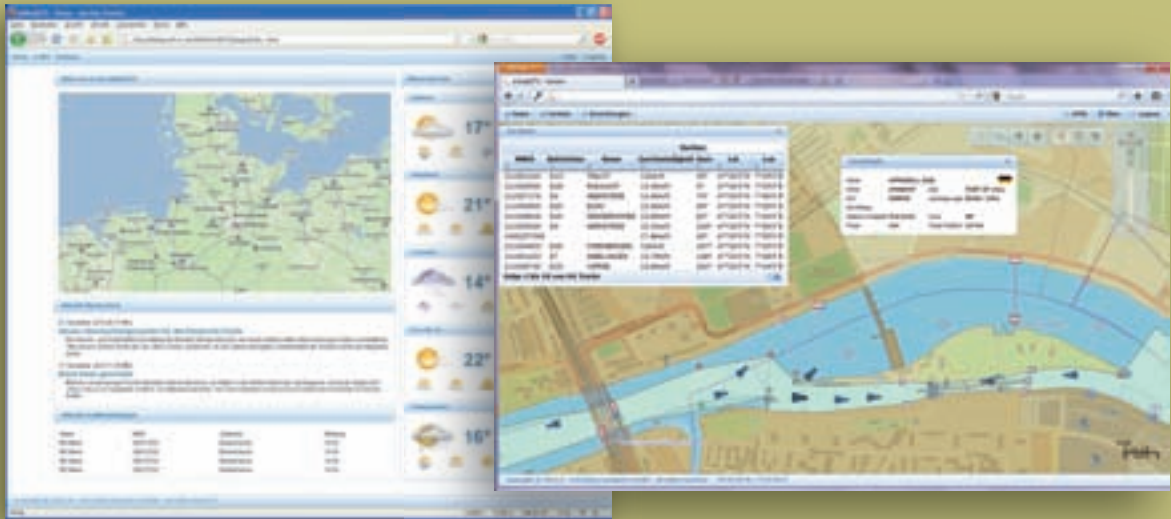
Open standards assure the embedding of any public available service (OGC-standards). The display follows a layer concept for seamless integration of any geo data. Existing software can be easily embedded.

**inWebDTS** is a unique tool for browser based advanced traffic management and traffic analysis with respect to actual and historic traffic data.

Sample configuration of inWebDTS



## Graphical User Interface



Integration of vessel traffic information

ECDIS map of River Rhine  
with Open Street Map

## Highlights

- Browser based client, suitable for LAN and WAN
- Works on any web browser including Internet Explorer, Mozilla, Firefox, Opera and Konqueror (Linux)
- Real VTS/CSS system provides data
- Layering of ECDIS chart and other maps
- High level track information from AIS and radar including track history
- Report of traffic events
- Possibility of input by web user
- Thorough concept of data related access rights
- Customized layout of user interface
- Self explaining graphical user interface
- Seamless integration in applications existing
- OGC-standards



Further information about recent developments of innovative navigation systems can be found on the homepage: <http://www.innovative-navigation.de>

**in-innovative navigation GmbH**  
Leibnizstraße 11  
D-70806 Kornwestheim, Germany  
phone: +49 (0) 7154 807 150  
fax: +49 (0) 7154 807 154  
email: [info@innovative-navigation.de](mailto:info@innovative-navigation.de)