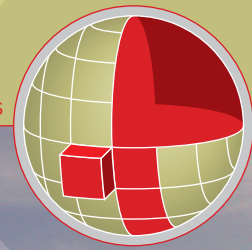


Supplies all information at one glance

in-PRODUCTS



RADAR *pilot* 720° OS

Open Sea Radar System

RADAR *pilot* 720° OS (Open Sea) is a sophisticated radar system providing a high resolution image due to sampling frequency of up to 100 MHz and OpenGL rendering. It meets and exceeds the requirements of IEC62388 CAT1 or CAT2 radar, depending on the display size. Radar enhancement, automatic sensitivity control (ASC, Auto STC, IR) and advanced image processing as well as sophisticated application of easily adaptable blanking sectors reduce data load and enable the interruption free radar display, even during zooming. Different display layouts are configurable via style sheets and profiles for the auto filtering can be selected.

Furthermore, **RADAR *pilot* 720° OS** offers alternatively display of true motion or relative motion, and true trails or relative trails. Automatic calculation of CPA/TCPA with warning functions is implemented.

RADAR *pilot* 720° OS offers the options for route display, calculation of cross track error, multiple radar display and network connection, features that go beyond the requirements of the standard.

RADAR *pilot* 720° OS fits the approved systems of BSH (LINUX) and Qinetiq (Windows™).

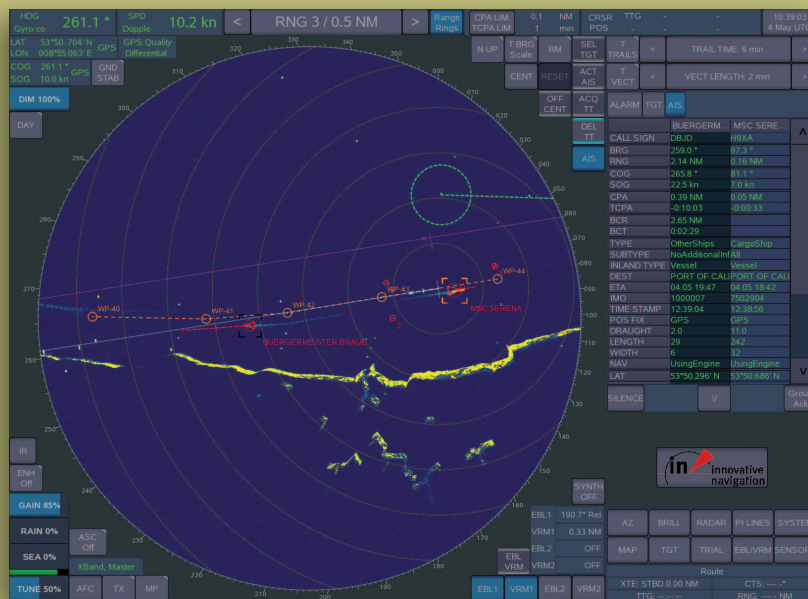
However, seamless integration with existing network installations and other software modules of in-innovative navigation GmbH is feasible.

in SIGHT



A product of innovative navigation

Graphical User Interface and Key Features



Highlights

- PC based radar system suited for a wide variety of radar transceiver (X-Band, S-Band)
- Highly sophisticated Graphical User Interface based on Open GL
- Immediate display of transparent afterglow available
- Highly reliable ARPA conform tracking, even without GPS
- CPA/TCPA calculation
- Indication of AIS information
- Ergonomic menu-driven operation, optionally as touch screen
- Without GPS, position stabilization via reference target
- Presentation of two EBLs and VRMs, floating as well as fixed
- Support of Parallel index lines
- Drawing and saving of maps
- Support of route functions
- Alarm server compatible with any hardware console for alarm generation
- Easily extendible due to modular design and plug-in concept
- Platform independent (LINUX, Windows™)



Further information about recent developments of innovative navigation systems can be found on the homepage: <http://www.innovative-navigation.de>

in-innovative navigation GmbH
 Leibnizstraße 11
 D-70806 Kornwestheim, Germany
 phone: +49 (0) 7154 807 150
 fax: +49 (0) 7154 807 154
 email: info@innovative-navigation.de