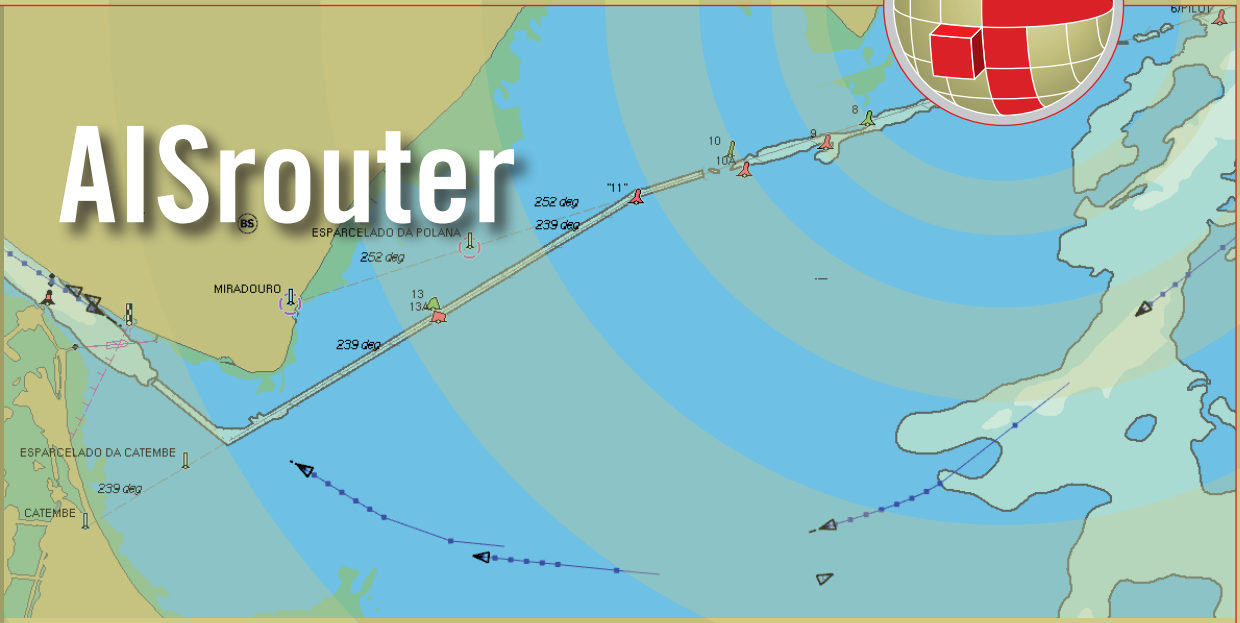


provides the most efficient way for AIS data transfer

# AISrouter



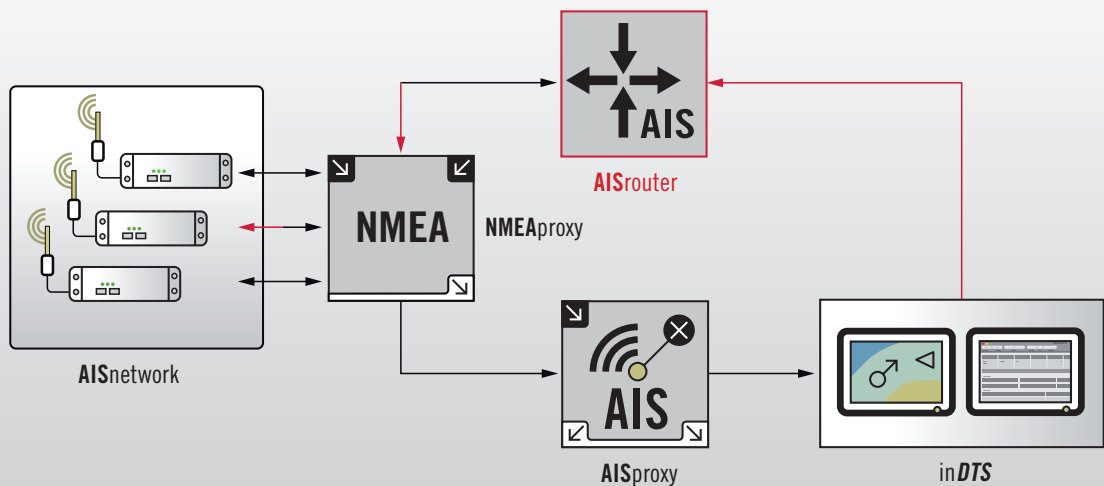
In AIS networks with several base stations, the **AISrouter** ensures that AIS data are forwarded from land to ship using the most efficient way possible.

To determine the best land-to-ship transmission AIS traffic in the network is evaluated and information is extracted about vessels and their destination MMSI.

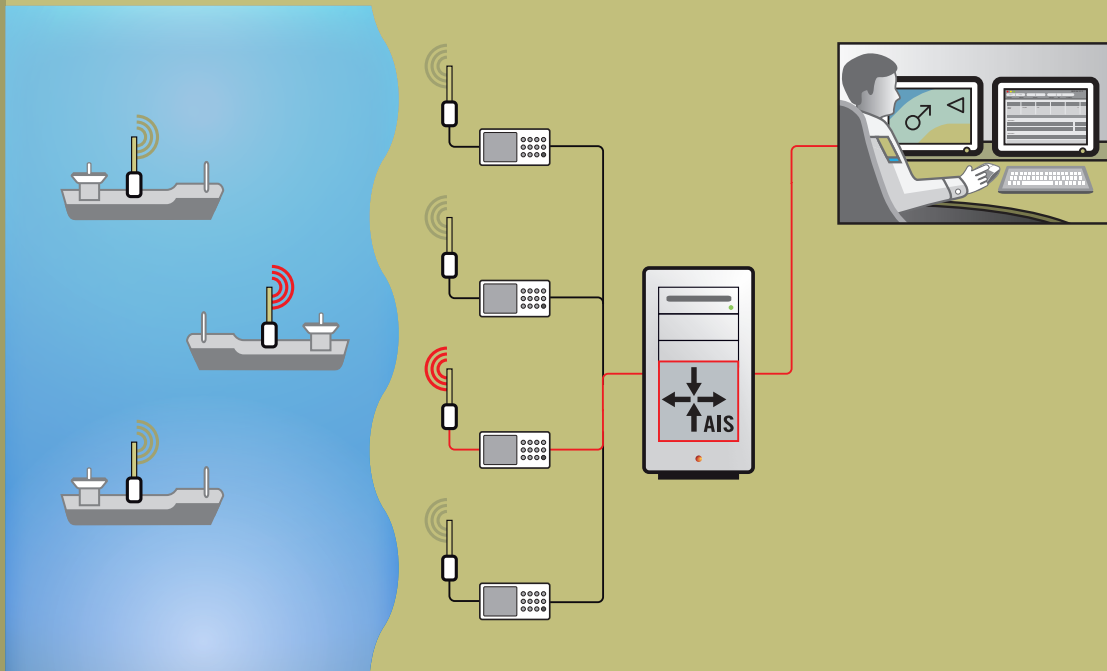
The **AISrouter** serves as cross point in order to transmit dynamically for each AIS message via appropriate base station. Thereby, it reduces the number of messages being forwarded by removing doublets. Thus, a minimum of bandwidth on air is necessary.

**AISrouter** can receive data of any connected base station with a TCP/IP interface, transponder with an NMEA interface, AIS proxy or NMEA proxy. NMEA proxy defines which base station should transmit the message to reach the correct transponder.

## Sample configuration of AISrouter



## Function



## Highlights

- *Most reliable and efficient transmission of AIS messages to the ship*
- *Significant reduction of AIS data transmitted*
- *Dynamic selection of available interface*
- *SNMP supervision*
- *Platform independent (LINUX, Windows)*



further information about recent developments of innovative navigation systems can be found on the homepage:  
[www.innovative-navigation.de](http://www.innovative-navigation.de)

**in-innovative navigation GmbH**  
 Leibnizstraße 11  
 D-70806 Kornwestheim (Germany)  
 phone: +49 (0) 71 54 / 807-150  
 fax: +49 (0) 71 54 / 807-154  
 email: [info@innovative-navigation.de](mailto:info@innovative-navigation.de)