



AISinspector

AISinspector is a professional software tool of in-innovative navigation GmbH for analysis of AIS data received by a network of AIS base station. On the other hand an input of live data is possible.

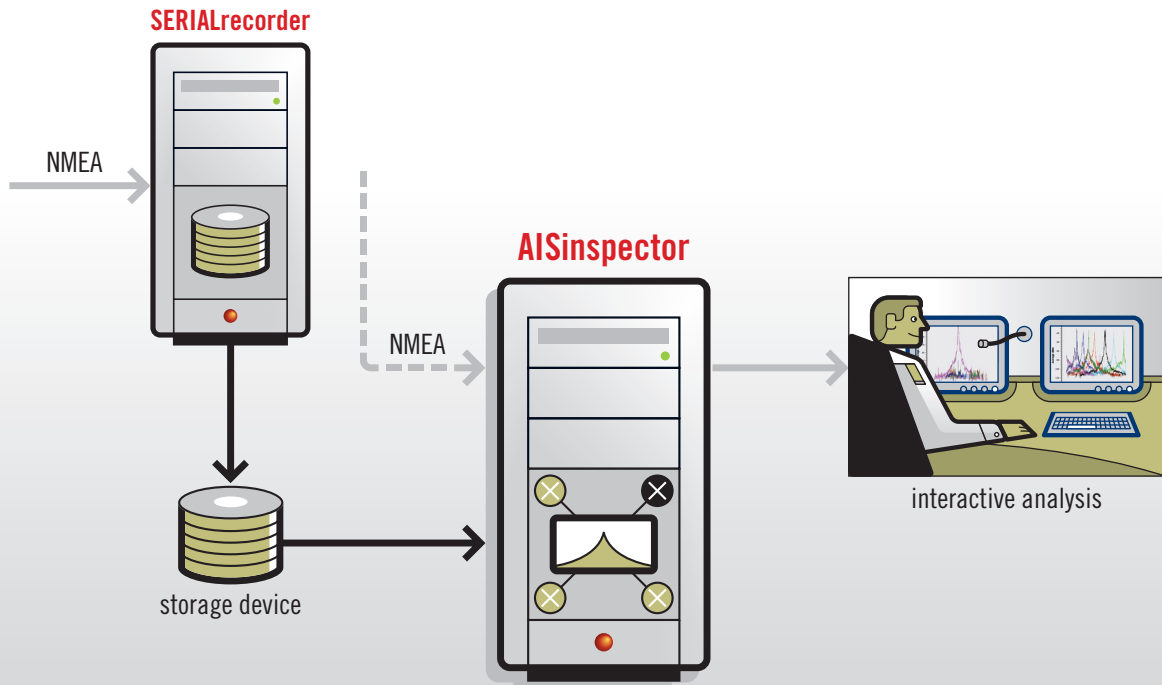
Subsequent application of a variety of specific filters allows search and investigation for specific data. The program processes textual (e.g. quality information), graphical (e.g. statistical data) or georeferenced data (e.g. location of transponder losses).

Statistic functions for traffic data like message quantity are involved allowing precise detection of loss of transponders or of technical misbehavior of AIS devices.

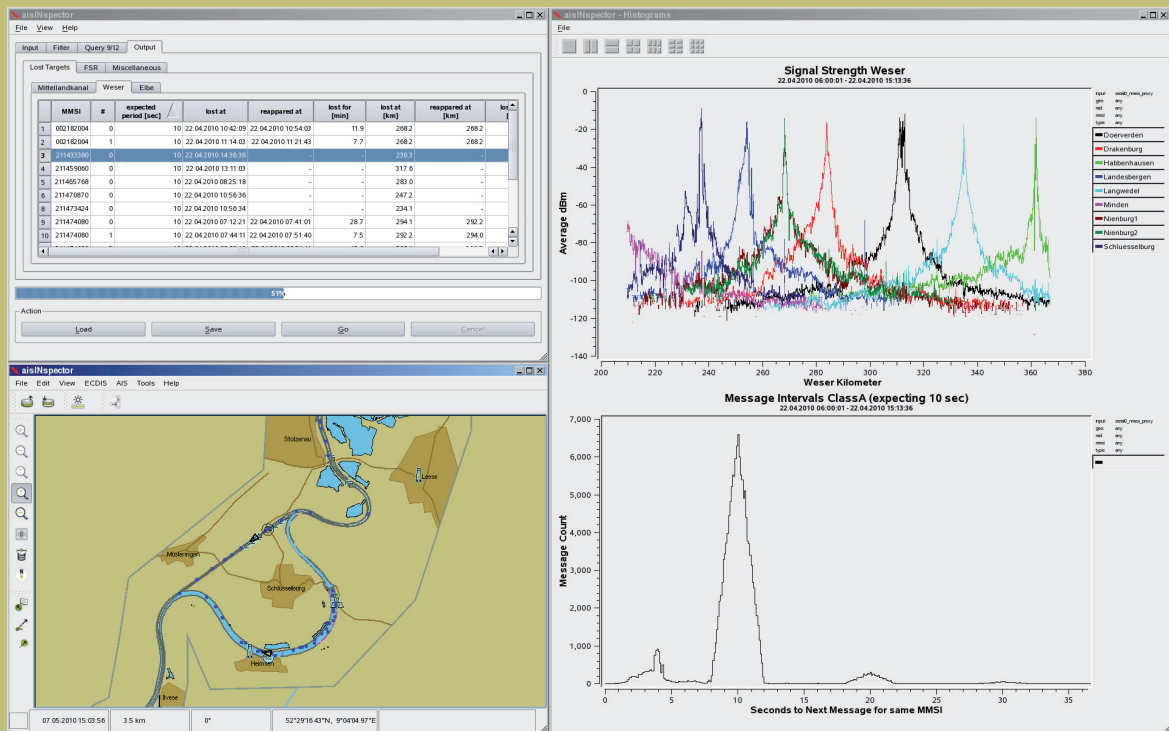
Areas with no AIS coverage become obvious, therefore, aisINSpector is perfectly suited to analyze AIS system setup and coverage of Base Stations. Field strength based on VSI data can be examined, as well as the quality of data transmission of particular transponder units. Data output is illustrated graphically on the ECDIS chart and, if desired, in separate windows as histograms or Correlation plots.

AISinspector is prepared for usage on inland waterways. It can use river kilometer as position references. Also a network of several rivers and canal sections can be configured within **AISinspector**.

Sample configuration of AISinspector



Graphical User Interface



Highlights

- *Input is standard NMEA data*
- *Comprehensive criteria for analysis (Time, geo-referenced per region and per river, MID, MMSI, message type)*
- *Quick data processing*
- *Various output options: graphical charts, geo-referenced, ASCII tables*
- *Stepwise refining of data analysis*
- *Export/Import of results to Excel, Access, etc.*
- *Well designed presentation of results*
- *Seamless zoom and pan interaction with all diagrams*
- *Printing of tables and diagrams*
- *Settings can be saved for further investigations*
- *Prepared for use on inland waterways*



Further information about recent developments of innovative navigation systems can be found on the homepage: <http://www.innovative-navigation.de>

in-innovative navigation GmbH
 Leibnizstraße 11
 D-70806 Kornwestheim (Germany)
 phone: +49 (0) 7154 807 150
 fax: +49 (0) 7154 807 154
 email: info@innovative-navigation.de